

TOOL 3300 ACCESSORIES



Flange connection for LE 3300
107.254: Flange connection, push-fit



Extension nozzle for LE 3300
107.255: Extension nozzle 36.5 x 160 mm, push-fit



Angled nozzle for LE 3300
107.256: Angled nozzle \varnothing 50 mm shank length 160 x 100 mm, push-fit



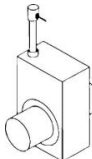
Tubular nozzle for LE 3300
107.257: Tubular nozzle, length 600 mm Length of air outlet slot 420 mm, push-fit



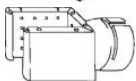
Wide slot nozzle for LE 3300
107.258: Wide slot nozzle 70 x 10 mm, push-fit



Wide slot nozzle for LE 3300
107.270: Wide slot nozzle 150 x 12 mm, push-fit



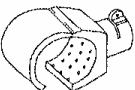
Air flow off/on switch for LE 3300
107.299: Air flow off/on switch The air flow is interrupted on command (pneumatic 5 bar) to the heaters Size 214 x 88 x 133



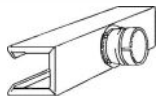
Sieve reflector 45 x 250 mm push-fit on LE 3300, ELECTRON
107.327: Sieve reflector 85 x 85 mm, push-fit



Folding reflector for LE 3300
107.330: Folding reflector 125 x 22 mm, push-fit



Folding reflector for LE 3300
107.331: Folding reflector 72 x 70 mm, push-fit



Shell reflector 45 x 250 mm push-fit on LE 3300, ELECTRON
107.340: Shell reflector 45 x 250 mm, push-fit