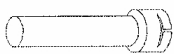


LHS 40S ACCESSORIES



**Flange connection push-fit for LHS 40S
107.254**



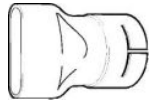
**Extension nozzle Extension nozzle 36.5 x 160 mm, push-fit for LHS
40S, 107.255**



**Angled nozzle \varnothing 50 mm shank length 160 x 100 mm, push-fit for
LHS 40S, 107.256**



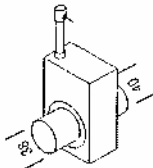
**Tubular nozzle length 600 mm Length of air outlet slot 420 mm,
push-fit for LHS 40S, 107.257**



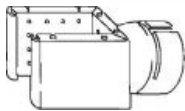
**Wide slot nozzle 70 x 10 mm push-fit on LHS 40S
107.258**



**Wide slot nozzle 150 x 12 mm push-fit on LHS 40S
107.270**



**Air flow off/on switch for LHS 40S
107.299, The air flow is interrupted on command (pneumatic 5
bar) to the heaters Size 214 x 88 x 133**



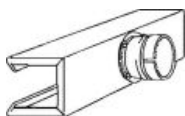
**Sieve reflector 85 x 85 mm push-fit on LHS 40S
107.327: Sieve reflector 85 x 85 mm, push-fit**



**Folding reflector 125 x 22mm push-fit on LHS 40S
107.330**



**Folding reflector 72 x 70 mm push-fit on LHS 40S
107.331**



**Shell reflector 45 x 250 mm push-fit on LHS 40S
107.340**